

MLS Area HH

| Listings | This Month | | | Year-to-Date | | |
|---------------------|--------------|--------------|---------------|---------------|---------------|--------------|
| | Sep 2021 | Sep 2020 | Change | 2021 | 2020 | Change |
| Single Family Sales | 232 | 263 | -11.8% | 1,881 | 1,959 | -4.0% |
| Condo/TH Sales | 5 | 3 | +66.7% | 45 | 17 | +164.7% |
| Total Sales | 237 | 266 | -10.9% | 1,926 | 1,976 | -2.5% |
| New Homes Only | 18 | 27 | -33.3% | 115 | 321 | -64.2% |
| Resale Only | 219 | 239 | -8.4% | 1,811 | 1,655 | +9.4% |
| Sales Volume | \$98,179,010 | \$81,390,982 | +20.6% | \$736,341,299 | \$570,068,393 | +29.2% |
| New Listings | 272 | 242 | +12.4% | 2,256 | 2,221 | +1.6% |
| Pending | 157 | 204 | -23.0% | 394 | 2,154 | -81.7% |
| Withdrawn | 13 | 8 | +62.5% | 72 | 99 | -27.3% |
| Expired | 2 | 5 | -60.0% | 13 | 68 | -80.9% |
| Months of Inventory | 0.9 | 0.8 | +9.0% | N/A | N/A | -- |

| Average | This Month | | | Year-to-Date | | |
|----------------------|------------|-----------|--------|--------------|-----------|--------|
| | Sep 2021 | Sep 2020 | Change | 2021 | 2020 | Change |
| List Price | \$399,289 | \$305,871 | +30.5% | \$361,405 | \$291,005 | +24.2% |
| List Price/SqFt | \$192 | \$147 | +30.4% | \$177 | \$144 | +23.4% |
| Sold Price | \$414,257 | \$305,981 | +35.4% | \$382,316 | \$288,496 | +32.5% |
| Sold Price/SqFt | \$200 | \$147 | +35.5% | \$188 | \$142 | +32.0% |
| Sold Price / Orig LP | 103.9% | 99.5% | +4.5% | 106.6% | 98.4% | +8.3% |
| Days on Market | 12 | 31 | -62.9% | 15 | 49 | -70.2% |

| Median | This Month | | | Year-to-Date | | |
|----------------------|------------|-----------|--------|--------------|-----------|--------|
| | Sep 2021 | Sep 2020 | Change | 2021 | 2020 | Change |
| List Price | \$340,035 | \$269,950 | +26.0% | \$320,000 | \$259,000 | +23.6% |
| List Price/SqFt | \$184 | \$145 | +26.5% | \$170 | \$141 | +20.3% |
| Sold Price | \$355,000 | \$270,000 | +31.5% | \$345,000 | \$255,995 | +34.8% |
| Sold Price/SqFt | \$193 | \$145 | +33.0% | \$180 | \$140 | +28.5% |
| Sold Price / Orig LP | 104.0% | 100.0% | +4.0% | 105.0% | 99.0% | +6.1% |
| Days on Market | 5 | 9 | -44.4% | 5 | 22 | -77.3% |

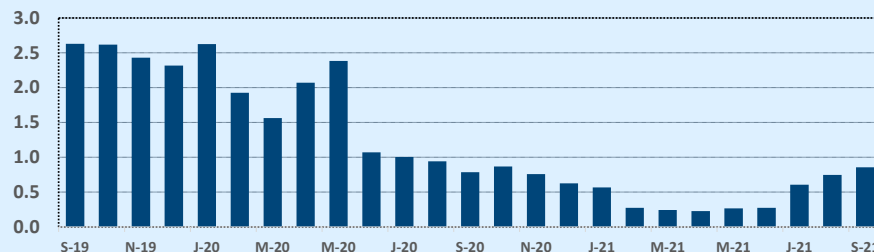
Residential Statistics

Independence Title

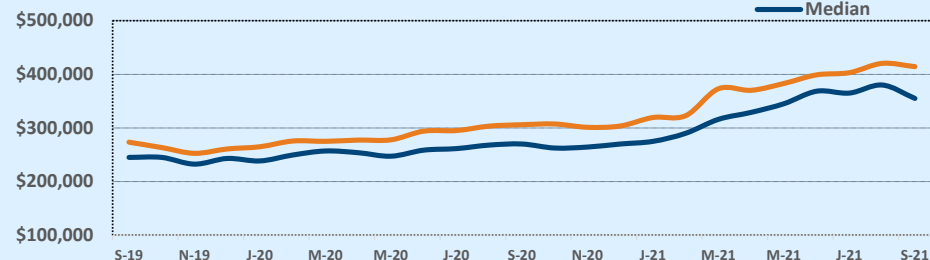
September 2021

| Price Range | This Month | | | Year-to-Date | | |
|----------------------|------------|------------|-----------|--------------|--------------|-----------|
| | New | Sales | DOM | New | Sales | DOM |
| \$149,999 or under | 1 | 1 | 62 | 4 | 5 | 29 |
| \$150,000- \$199,999 | -- | 2 | 28 | 15 | 10 | 46 |
| \$200,000- \$249,999 | 2 | 4 | 4 | 110 | 130 | 17 |
| \$250,000- \$299,999 | 26 | 26 | 5 | 449 | 391 | 19 |
| \$300,000- \$349,999 | 56 | 74 | 10 | 543 | 459 | 10 |
| \$350,000- \$399,999 | 67 | 61 | 14 | 470 | 369 | 12 |
| \$400,000- \$449,999 | 38 | 22 | 10 | 230 | 223 | 17 |
| \$450,000- \$499,999 | 19 | 14 | 7 | 140 | 116 | 14 |
| \$500,000- \$549,999 | 13 | 11 | 13 | 79 | 76 | 12 |
| \$550,000- \$599,999 | 20 | 5 | 14 | 66 | 45 | 12 |
| \$600,000- \$699,999 | 23 | 9 | 24 | 56 | 42 | 29 |
| \$700,000- \$799,999 | 1 | 1 | 5 | 24 | 14 | 32 |
| \$800,000- \$899,999 | 1 | 2 | 26 | 12 | 12 | 22 |
| \$900,000- \$999,999 | 1 | 1 | 6 | 13 | 10 | 8 |
| \$1M - \$1.99M | 1 | 3 | 20 | 31 | 19 | 8 |
| \$2M - \$2.99M | 2 | -- | -- | 8 | 4 | 9 |
| \$3M+ | 1 | 1 | 41 | 6 | 1 | 41 |
| Totals | 272 | 237 | 12 | 2,256 | 1,926 | 15 |

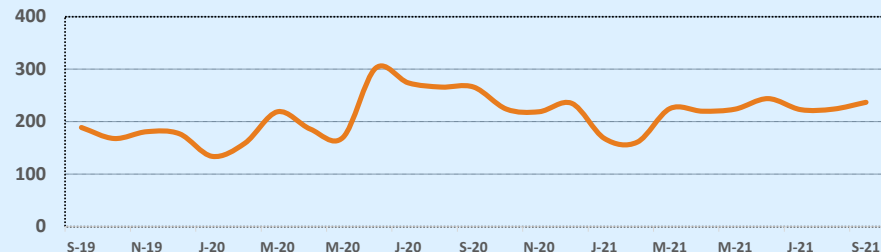
Months of Inventory - Last Two Years



Average & Median Sales Price - Last Two Years



Number of Sales - Last Two Years



Based on information from the Austin Board of REALTORS® (alternatively, from ACTRIS). Neither the Board nor ACTRIS guarantees or is in any way responsible for its accuracy. The Austin Board of REALTORS®, ACTRIS and their affiliates provide the MLS and all content therein "AS IS" and without any warranty, express or implied. Data maintained by the Board or ACTRIS may not reflect all real estate activity in the market.